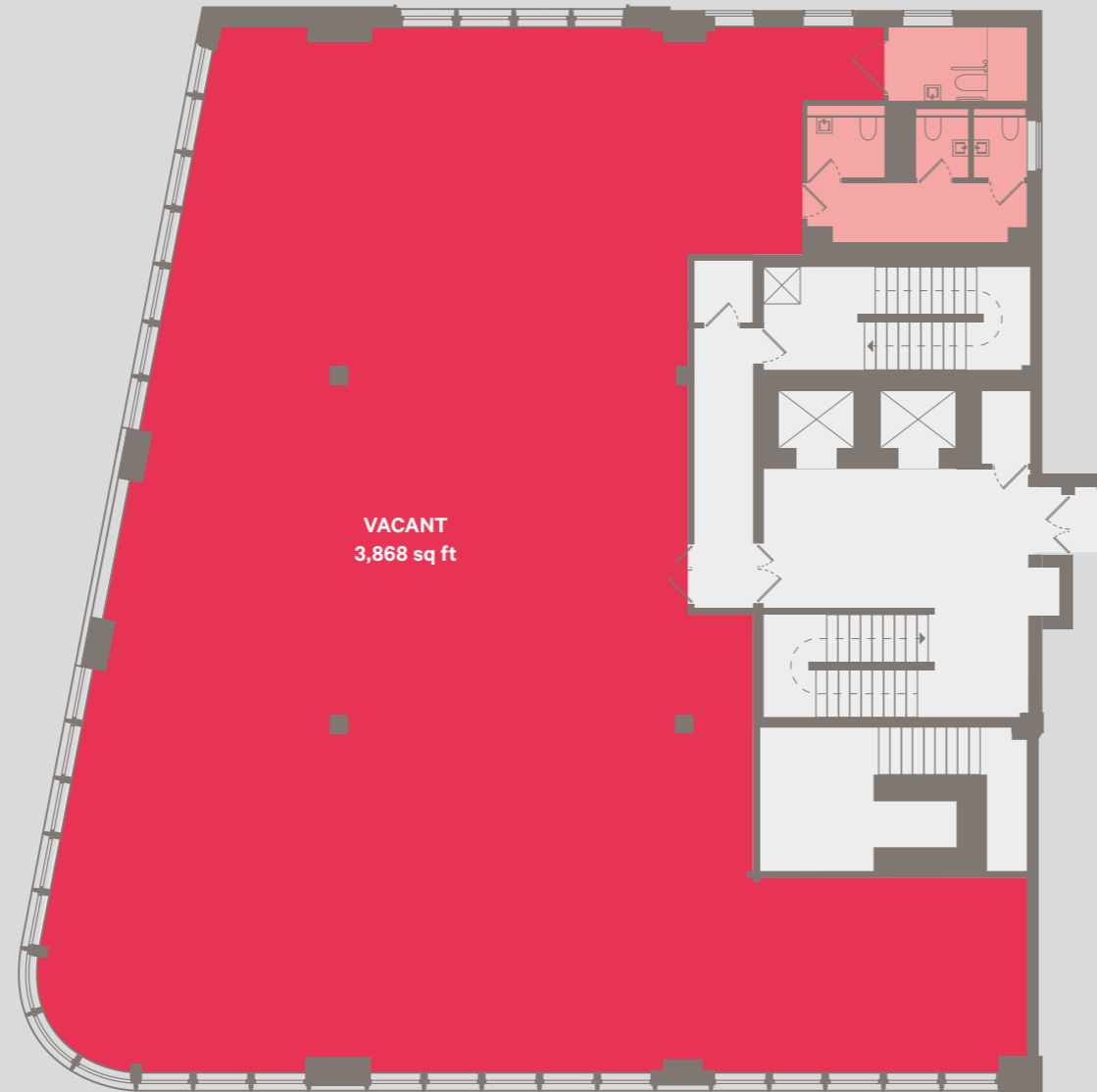




## YORKSHIRE HUB

Greek Street – Leeds

**First Floor**  
3,868 sq ft  
Grade A space  
Full or part floors available



---

**Exposed services and soffits**

---

**LED lighting with bespoke designs**

---

**High floor to ceiling heights**

---

**Sleek and luxurious WC facilities  
with a polished finish**

---

**Changing facilities with 7 showers  
and 1 accessible shower**

---

**55 storage lockers available**

---

**Secure indoor cycle storage  
and maintenance station**

---

**49 indoor parking bays including  
dedicated spots for car charging**

---

**Exposed VRF comfort cooling**

---

A building by:



Agency Team:



Misrepresentation Act

The joint agents, for themselves and for the vendors or lessors of this property, whose agents they are, give notice that: These particulars are produced in good faith, but are set out as a general guide only, and do not constitute any part of a contract. No person in the employment of the joint agents has the authority to make or give any representation or warranty whatever in relation to this property. All plans and computer generated images are for indicative purposes only and not to scale. March 2016

0113 246 1533  
knightfrank.co.uk:

yhleeds.com



## YORKSHIRE HUB

Greek Street – Leeds

**Typical Floor**  
(2nd, 3rd, 4th & 6th Floors)  
2,820 sq ft  
Grade A space  
Full or part floors available

---

**Exposed services and soffits**

---

**LED lighting with bespoke designs**

---

**High floor to ceiling heights**

---

**Sleek and luxurious WC facilities  
with a polished finish**

---

**Changing facilities with 7 showers  
and 1 accessible shower**

---

**55 storage lockers available**

---

**Secure indoor cycle storage  
and maintenance station**

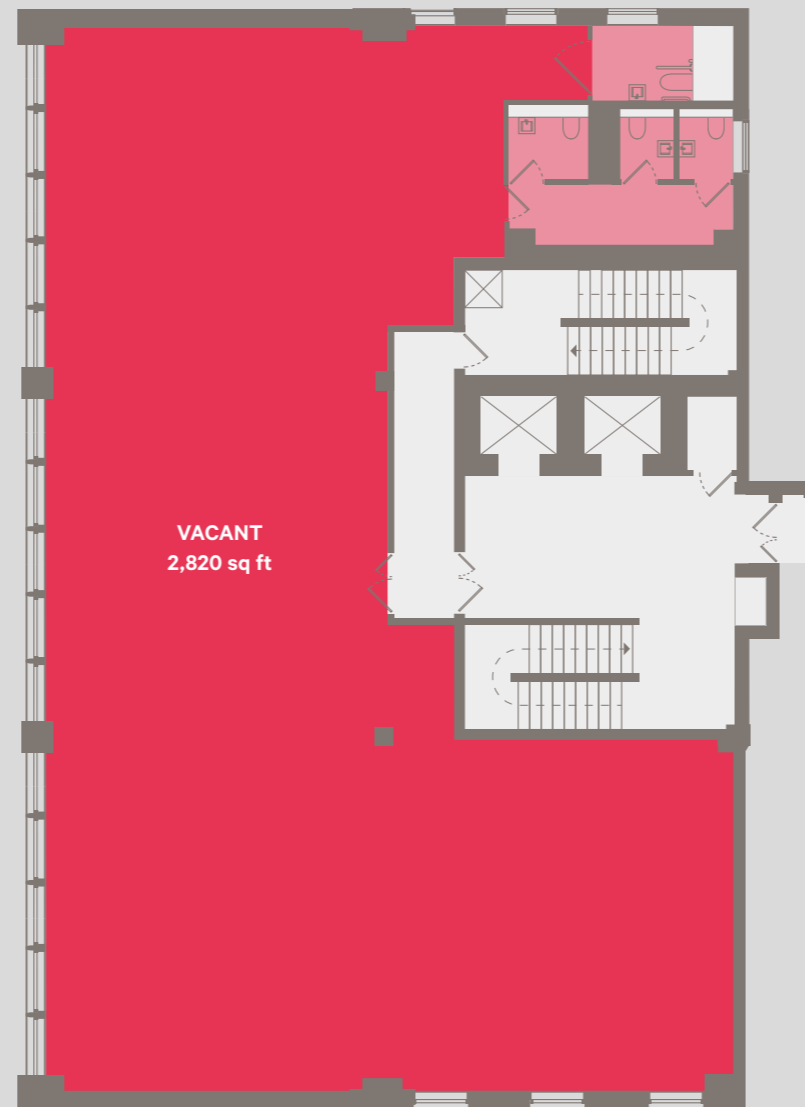
---

**49 indoor parking bays including  
dedicated spots for car charging**

---

**Exposed VRF comfort cooling**

---



VACANT  
2,820 sq ft

A building by:



Agency Team:

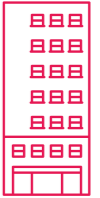


Misrepresentation Act

The joint agents, for themselves and for the vendors or lessors of this property, whose agents they are, give notice that: These particulars are produced in good faith, but are set out as a general guide only, and do not constitute any part of a contract. No person in the employment of the joint agents has the authority to make or give any representation or warranty whatever in relation to this property. All plans and computer generated images are for indicative purposes only and not to scale. March 2016

0113 246 1533  
knightfrank.co.uk:

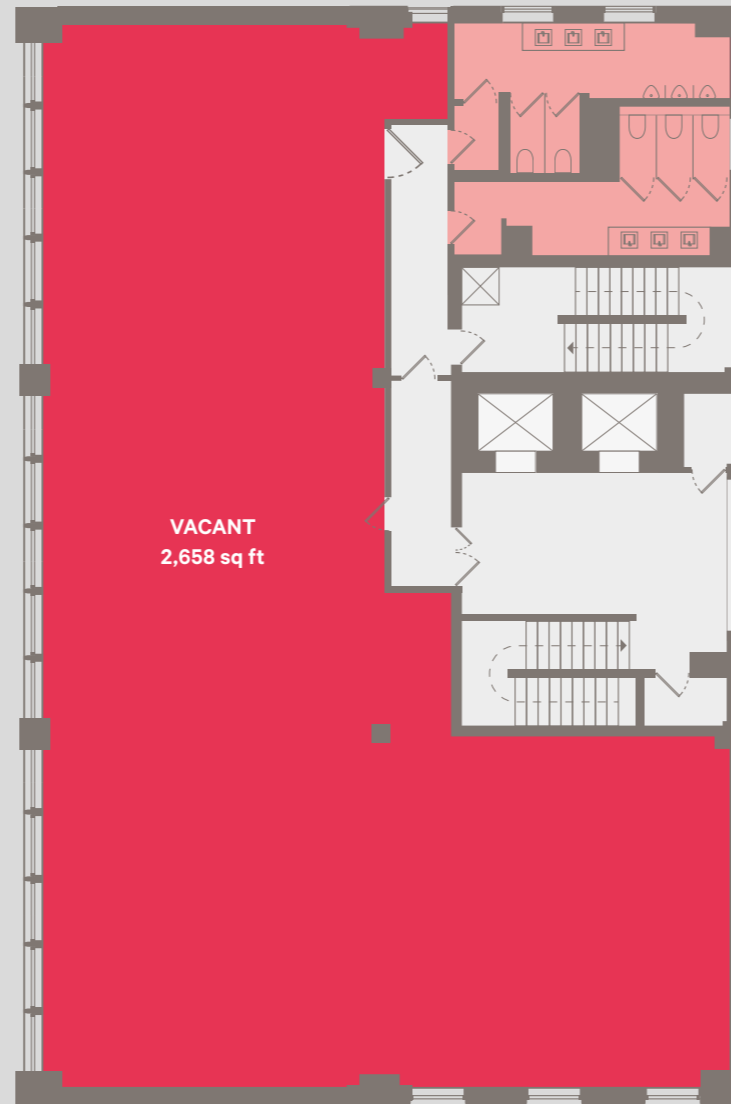
yhleeds.com



## YORKSHIRE HUB

Greek Street – Leeds

**Seventh Floor**  
2,658 sq ft  
Grade A space  
Full or part floors available



---

**Exposed services and soffits**

---

**LED lighting with bespoke designs**

---

**High floor to ceiling heights**

---

**Sleek and luxurious WC facilities  
with a polished finish**

---

**Changing facilities with 7 showers  
and 1 accessible shower**

---

**55 storage lockers available**

---

**Secure indoor cycle storage  
and maintenance station**

---

**49 indoor parking bays including  
dedicated spots for car charging**

---

**Exposed VRF comfort cooling**

---

A building by:



Agency Team:



Misrepresentation Act

The joint agents, for themselves and for the vendors or lessors of this property, whose agents they are, give notice that: These particulars are produced in good faith, but are set out as a general guide only, and do not constitute any part of a contract. No person in the employment of the joint agents has the authority to make or give any representation or warranty whatever in relation to this property. All plans and computer generated images are for indicative purposes only and not to scale. March 2016

0113 246 1533  
knightfrank.co.uk:

yhleeds.com